
A separate report is submitted in the private part of the agenda in respect of this item, as it contains details of financial information required to be kept private in accordance with Schedule 12A of the Local Government Act 1972. The grounds for privacy are that it contains information relating to the financial and business affairs of any particular person (including the authority holding that information). The public interest in maintaining the exemption under Schedule 12A outweighs the public interest in disclosing the information.

Cabinet
Council

3 March 2015
17 March 2015

Name of Cabinet Member:

Cabinet Member for Public Services – Councillor Lancaster

Director Approving Submission of the report:

Executive Director for Place

Ward(s) affected:

All

Title:

Public Realm Phase 3 extension (3a)

Is this a key decision?

Yes as it has the potential to affect all wards within the City and expenditure is in excess of £1m

Executive Summary:

An opportunity has arisen to bid for further European Regional Development Funding (ERDF) to continue Coventry's extremely successful programme of public realm and infrastructure improvements.

A bid for a further £11.7m has been submitted. This, along with up to an additional £3m from the Growth Deal 2 grant (subject to formal approval) could take the total investment in public realm projects to over £40m with only £3.5m having been funded using the Council's own funds. The benefits of this investment are now being seen with the announcement of the conversion of Cathedral Lanes into a restaurant quarter, the expansion of Coventry University and growing interest in Friargate.

Taken with the investment reported in the Station Masterplan and Highways and Transport Capital Programme reports, the total additional investment in the city for 2015/16 is over £70m. This will further bolster the confidence evidenced in the recent report from the thinktank 'Centre for Cities' where Coventry was named as the most successful city in the West Midlands and a top 10 City in the Country in terms of economic and jobs growth. The public realm works will help bring forward future investment in the city centre, including the City Centre South development.

The additional public realm investment could see:

- extension of the Belgrade Plaza scheme to include the provision of an alternative route to West Orchards car park to alleviate congestion.
- an enhancement of the Lidice Place proposals in front of St Johns church;
- a major initiative to promote tourism in the city including improvements to the links between the Cathedral and the revamped and expanded Motor Museum along with enhancements to the Hill Top conservation area;
- re-paving of Far Gosford Street to complement the Gosford Street public realm scheme, the redevelopment of many historic buildings and Fargo Village;
- partial de-culverting of the River Sherbourne and waterside landscaping at Palmer Lane to kickstart the regeneration of this area;
- enhancement to Bishop Street to complete the link between existing public realm works and the canal basin scheme to help promote regeneration;

The bid also includes additional funding for the Friargate infrastructure and Whitley Bridge.

It should be noted that although we have been invited to make this bid by the Department for Communities and Local Government (DCLG), the actual amount available is going to depend on how much other authorities decide to hand-back and DCLG interpretation of the bids being submitted as expansion to current schemes. All authorities in the ERDF programme have to report quarterly on progress and are expected to 'de-commit' funding if they think they cannot spend it by the deadline of December 2015. Therefore, the programme set out in this report has to be flexible so that any money the City Council receives can be spent efficiently as the deadline is non-negotiable.

To ensure that the capital programme as a whole can be managed within the available budget, this report proposes a priority order for the schemes. The first priority will be to ensure the Friargate (including Warwick Road Station Access) and Whitley projects are completed.

The bid was submitted on January 16th 2015 and the outcome is expected at the end of February 2015. There is the possibility of even further ERDF funding being available following the submission of the April returns.

Recommendations

Cabinet is requested to:

1. Delegate authority to the Executive Director Place, in consultation with Cabinet Members for Public Services and for Business, Enterprise and Employment, to agree the detailed works for schemes in Coventry city centre Public Realm Phase 3a as set out in Appendix B and their prioritization for implementation given the uncertainty on the available funding.

Cabinet are requested to recommend that Council:

2. Authorise the new and additional programme of works, as set out in Appendix B, for Public Realm Phase 3a totalling £15.4m, to be added to the approved capital programme for 2015/16, utilising £11.7m ERDF, £3m Growth Deal grant, £0.7m LTP subject to funds being made available and priority order set out in this report;
3. Subject to funding agreement and conditions, authorise the accelerated expenditure of £3m Growth Deal grant from the 'Coventry City Centre' project from 2016/17 to 2015/16 to part-fund the public realm programme and cash-flowed by the capital programme;

4. Authorise the updating of the Council's approved Capital programme, in consultation with Cabinet Member for Public Services, to reflect the revised detailed programme of works as can be afforded within funding available including any new ERDF and Growth Deal 2 monies

Council are asked to:

1. Authorise the new and additional programme of works, as set out in Appendix B, for Public Realm Phase 3a totalling £15.4m to be added to the approved capital programme for 2015/16, utilising £11.7m ERDF and £3m Growth Deal grant, subject to funds being made available and priority order set out in this report;
2. Subject to funding agreement and conditions, authorise the accelerated expenditure of £3m Growth Deal grant from 2016/17 to 2015/16 to part-fund the public realm programme and cash-flowed by the capital programme;
3. Authorise the updating of the Council's approved Capital programme, in consultation with Cabinet Member for Public Services, to reflect the revised detailed programme of works as can be afforded within funding available including any new ERDF and Growth Deal 2 monies

List of Appendices included:

Appendix A – Plan showing location of Phase 3a schemes
Appendix B – Descriptions of new and enhanced schemes
Appendix C – Plans of new and enhanced schemes

Background Papers:

None

Other Useful Documents:

1. Coventry City Centre Public Realm Phase 3 – Council Report of 7th October 2014
2. Coventry City Centre Public Realm Phase 2 Update – Council Report of 23rd July 2013
([Click Here to Access Council Report](#))
3. Coventry City Centre Public Realm Phase 2 – Council Report of 23rd October 2012
([Click Here to Access Council Report](#))
4. European Regional Development Fund (ERDF) Open Call for Extension to Projects – Cabinet and Council report of 3rd and 17th March 2015 respectively

Has it been or will it be considered by Scrutiny?

No

Has it been or will it be considered by any other Council Committee, Advisory Panel or other body?

No

Will this report go to Council?

Yes, 17 March 2015

This page is intentionally left blank

Report title: Public Realm Phase 3 extension (3a)

1 Context (or background)

- 1.1 The background to the Coventry Public Realm Project was covered in a report to Cabinet on January 21st 2011. Phase 1 was completed in summer 2012; the success of these works led to Phase 2 being approved by Cabinet on October 9th 2012, with a revised programme subsequently approved July 9th 2013, and Phase 3 being approved on October 7th 2014.
- 1.2 Phase 2 is now complete and Council House Square has already won a national award and is in the running for a number of others. Phase 3 is underway with works on Gosford Street having begun following successful partnership working with Coventry University.
- 1.3 The Public Realm programme has been extremely successful to date, with the programme having already regenerated almost 13.5 hectares of brownfield land within Coventry city centre, and levered in more than £16.5 million of additional public sector funding and £3.6 million private sector investment.
- 1.4 In December 2014, the Department for Communities and Local Government (DCLG) invited the City Council to bid for additional European Regional Development Funding (ERDF). A bid was submitted on January 16th 2015, as requested, for an additional £11.7m of ERDF in total. This total comprised £6.89m for an extension of the public realm programme and £4.81m to support the Friargate programme. This level of additional grant requires bringing forward the use of £3M Growth Deal from 2016/17 as match funding against proposed schemes.
- 1.5 The extension to the public realm comprises 4 new schemes and extensions to 2 existing schemes:
 - Belgrade Plaza: further to the proposals set out in the October 2014 Cabinet Report, an alternative route to West Orchards car park is now proposed to alleviate congestion and ensure that the Plaza itself becomes an attractive public space.
 - Lidice Place: following the success of Council House Square it is proposed to enhance the original scheme using similar design elements. An all-purpose events space will also be created off Spon Street on the remains of Queen Victoria Road (opposite Lower Holyhead Road). This will radically improve the setting of this historic part of the city centre and encourage footfall;
 - City Centre Tourism Package: a major initiative to promote tourism in the city including environmental improvements to Fairfax Street and Whittle Arch to improve the link between the Cathedral and the revamped and expanded Motor Museum. There will also be improved facilities for coaches along with enhancements to the Hill Top conservation area including repairs to cobbles, removal of clutter and improved interpretation;
 - Far Gosford Street: to complement the Gosford Street public realm scheme and the redevelopment of many historic buildings and Fargo Village it is proposed to repave the pavements and to reduce the clutter of street furniture. Landscape improvements to the former churchyard are also proposed;

- Palmer Lane redevelopment: demolition of former Illingworth building and partial opening up of culvert to expose River Sherbourne. The river banks will be re-profiled to create terraced landscaped area and the surrounding area landscaped pending a comprehensive redevelopment of the area between Burges and Trinity Street;
 - Bishop Street: repaving, resurfacing and provision of street trees to Bishop Street between Corporation Street and Tower Street. This will complete the link between existing public realm works and the proposed canal basin works to complete a high quality walking route from the railway station to the canal basin and to help promote the regeneration of this part of the city centre;
- 1.6 More details about these schemes can be found in appendices A, B and C.
- 1.7 In the event that we are not successful with some or all of the bid for additional ERDF, the wider infrastructure (including public realm) programme will need to be reviewed to ensure it is affordable within previously approved resources together with Growth Deal 2 funding.
- 1.8 The Friargate Junction 6 programme, supported by Regional Growth Fund (RGF) and ERDF, is progressing well. The opportunity has been taken to bid for additional funding to support the Friargate programme to ensure opportunities such as incorporating heatline can be taken and ensuring that the quality of the completed works meets the aspiration for a world class business district.
- 1.9 The outcome of the bid is expected to be known by the end of February 2015 and the amount received will depend on how much money is 'de-committed' by other local authorities and organisations across the West Midlands. Early indications are that a smaller than expected amount has been voluntarily de-committed meaning that the changes of securing all the ERDF we have bid for is unlikely. Irrespective of the amount of ERDF awarded, an affordable programme of infrastructure works will be designed to ensure we maximise physical delivery of works on the ground whilst requiring no additional corporate resources.
- 1.10 Our approach, which has been very successful to date, is to present DCLG with a confident programme of works we can delivery. If projects have been submitted in a transparent way should more funding become available as the year goes on Coventry should have the opportunity to access it – subject to our ability to deliver as the year goes on.
- 1.11 The end date for spending ERDF has not changed: all money has to be spent by December 31st 2015, which means that all work on site needs to be complete by the end of October 2015.
- 1.12 As stated in 1.9, it is essential that the overall capital programme is managed within the available finance. Consequently it is necessary to ensure the City Council's programme is flexible so that full advantage can be taken of all funding opportunities whilst avoiding any overspends. To assist with this, the following priority order for schemes is proposed:
1. Completion of Whitley Junction
 2. Station Access / Friargate works
 3. Belgrade Plaza
 4. Lidice Place
 5. City Centre Tourism Package
 6. Far Gosford Street paving

- 7. Palmer Lane
- 8. Canal Basin & Bishop Street link

- 1.13 Overall, this additional investment will support job creation and promote the regeneration of the city centre and further improve accessibility to employment, retail and tourist attractions. This programme will see the completion of a number of infrastructure elements in the city centre outlined in the Cabinet Report of February 10th 2015 on the City Centre Area Action Plan.
- 1.14 Procurement options for the delivery of the works are currently being considered. It is proposed to use the City Council's own direct labour force (DLO), supported by the minor civils contract, for all schemes with the exception of Palmer Lane and Whittle Arch. It is proposed to utilise the Birmingham City Council Highways and Infrastructure Works Framework to procure the contractor for these schemes and also the Station Access Tunnel under Warwick Road. Professional services will be procured using the West Midlands Highway Alliance Framework Shared Professional Services Contract, with exception to SLC rail who are being procured through Warwickshire County Council's Rail Advisor Contract. Procurement Board approved the procurement strategy for the works in May 2014 and a further approval will be sought for additional works in February 2015. All works will be procured to meet EU procurement requirements.

2 Options considered and recommended proposal

- 2.1 **Option 1 – (Preferred) The City Council approves using ERDF for the schemes set out in paragraph 1.5 and accelerates expenditure of Growth Deal grant to act as match funding: schemes to be implemented in accordance with the priority order set out in paragraph 1.15 dependent on the availability of ERDF** - The City Council has acted as lead applicant or accountable body for many European-funded projects since 1984 when the area first became eligible for such funding. In essence it means being responsible for monitoring spend, submitting grant claims to DCLG for eligible expenditure and demonstrating that the grant has been spent in achieving the outputs of the project. By taking on this role, the City Council will administer up to a further £11.7m ERDF grant, along with up to £3m Growth Deal grant as well as managing the other public sector and private sector resources which make up the funding package. It is recommended this option is approved to maximise funds available to deliver the full programme of public realm improvements to maximise impact. It is not known what funds may become available for public realm post 2015, therefore this is a last opportunity to utilise a significant package of grant funding to further enhance the city centre and complete the programme of works started at part of the Coventry 2012 initiative.

Option 2 - (Preferred 2) Proceed using some ERDF funding set out in paragraph 1.5; implement schemes in accordance with the priority order set out in paragraph 1.15 DCLG could award some additional ERDF funding but not the total amount requested. Additional ERDF would be matched by existing resources and Growth Deal funds to fund Friargate/Whitley, Belgrade and Lidice Place, and any further schemes as allowed in order of prioritisation. ERDF previously allocated to the Canal Basin scheme may need to be diverted to help fund higher priority schemes; this would require approval from DCLG.

Option 3 - (Default position) Proceed without any of the ERDF external funding package - If the Public Realm work were to be funded entirely by existing resources and additional Growth Deal 2 funding, the overall programme would need to be reshaped to deliver the top priority projects within the available resources. This would enable us to afford the top four projects as listed in section 1.15, with a caveat that the programme of works is affordable within overall resources. As per option 2, ERDF previously allocated to the Canal Basin scheme may need to be diverted to help fund higher priority schemes; this would require approval from DCLG.

2.2 Recommended Proposal

It is recommended that the Council moves forward with Option 1. It should be noted that there is no guarantee we will receive any or all of the ERDF that is being bid for, but Option 1, by ensuring the most favourable intervention rate, maximizes our chances of success, however options 2 and 3 could become a reality and would still deliver the authority's priority schemes within available resources.

3 Results of consultation undertaken

3.1 The New Jobs Strategy 2014 - 2017 is the Council's proposal for taking forward the economy of the city in the light of the changed circumstances experienced over recent years. ERDF matched against core funds for these projects is aligned to delivering the Jobs Strategy and the priorities of the CWLEP set out in their 4-year strategy based on the Local Economic Assessment and feedback from local businesses which include:

- Creating New Jobs
- Creating business growth
- Removing barriers to growth

3.2 The development of the ERDF projects has been completed with LEP partners and reflects the CWLEP's priorities most in need of public investment.

3.3 The CWLEP has undertaken a consultation exercise with local business to determine the priorities it should focus on. The proposals and projects within this report fully align to the proposed CWLEP Strategic Economic Plan.

3.4 Consultation with Access Groups has been on-going throughout the delivery of Phases 1 to 3, and will continue for the development of the additional schemes. All schemes incorporate trees and grass wherever practical in response to repeated calls for more greenery in the city centre.

4 Timetable for implementing this decision

4.1 The timetable for Phase 3a is incredibly tight. Design work is taking place at risk on all of the listed projects and the DLO have planned this work in their programme, along with contingency schemes in the event of funding not becoming available. An announcement is expected at the end of February 2015 and will be reported verbally at Cabinet. Additional funding may also be awarded in April 2015. The use of the DLO allows the Council to respond flexibly and to take advantage of any funding that may become available.

- 4.2 All ERDF spend must be defrayed by December 31st 2015 in order to submit a final grant claim. Therefore works are to be completed by end October 2015 to enable time for final payments to be made.
- 4.3 The works at Whitley are underway and are now expected to be completed by the end of July 2015. The works on the access tunnel at Coventry Station will be put out to tender in February 2015 and the tunnel built between June and October 2015.

5 Comments from Executive Director Resources

5.1 Financial implications

- 5.1.1 The report proposes an expansion of the Public Realm Phase 3 programme (as approved by Cabinet on October 7, 2014) by £9.89m with an additional £4.81m to support the Friargate and Whitley projects. No additional corporate resources are required to deliver these works.
- 5.1.2 The Council is required to be the accountable body for all of the ERDF projects including those listed in Appendix B. Whilst this is not unusual, the financial implications to the Council should be clearly understood. We have entered into a legally binding ERDF contract with Department for Communities and Local Government, therefore are obliged to ensure that the projects are delivered compliantly within ERDF rules or face financial penalty, which could result in withdrawal of a proportion or all of the grant awarded. There is minimal risk of this occurring. For risk management refer to section 6.3.
- 5.1.3 The Growth Deal funding condition means that an additional £3m will be allocated to the council from 2016/17, therefore accelerated spend is required under the capital programme as it is forecast that the total grant will be spent by the end of December 2015.
- 5.1.4 Approvals are sought for £11.7m ERDF, along with an additional £3m Growth Deal monies which is included in public match..

5.2 Legal implications

- 5.2.1 Planning consent will be required for the Palmer Lane and Allied Carpets scheme. The respective building owners will be the applicant under the Town and Country Planning Act 1990.
- 5.2.2 The public realm schemes will be delivered under the Council's general highway improvement/traffic management powers under the Highways Act 1980 except in relation to any new or amended formal pedestrian crossings/traffic regulation orders/traffic-calming measures which will be implemented following a separate statutory notice/objection process under the Road Traffic Regulation Act 1984.

6 Other implications

6.2 How will this contribute to achievement of the Council's key objectives / corporate priorities (corporate plan/scorecard) / organisational blueprint / Local Area Agreement (or Coventry Sustainable Community Strategy)?

6.2.1 The City Council's New **Jobs Strategy 2014-17** highlights the importance of creating jobs which the city needs. All project extensions will support job creation within Coventry and be aligned with the following two objectives of the strategy:

- Secure job opportunities through investment – businesses and investors continue to recognise Coventry as the right place for them to invest and grow
- Help people get jobs – pursuing prosperity so that in Coventry everyone who wants a job will have the opportunity to secure one that matches their skills.

6.2.2 All these schemes will indirectly or directly provide jobs across the city and sub-region. The Jobs Strategy specifically acknowledges the importance of public realm improvements in creating new jobs in the city centre. Coventry's Sustainable Community Strategy sets out the ambitions for "a prosperous Coventry with a good choice of jobs and business opportunities for all the city's residents". One of its long-term outcomes is accelerating economic growth for the city and creating a more diverse range of businesses and employment.

6.2.3 The proposed extensions to the current Public Realm programme are closely aligned with one of the **CWLEPs core objectives**, which is to develop Strategic Infrastructure. It is also aligned with the CWLEP's Inward Investment objective, particularly as improved public realm will help to open up new employment sites (most notably the Friargate and City Centre South sites), and provide compelling reasons for companies to locate into the region.

6.2.4 The CWLEP recognises the importance of a successful Coventry city centre to the sub-region as a whole in its strategy. Public Realm Phase 3a is closely aligned with the "Unlocking Growth Potential" theme of the Coventry and Warwickshire Strategic Economic Plan (SEP), specifically by unlocking the potential for development on key new city centre employment sites.

6.3 How is risk being managed?

6.3.1 Arrangements are in place within the Place Directorate to deliver the accountable body role ensuring that procedures are in place to manage risk. There is a governance structure in place for the public realm programme whereby risks are managed by project team level and reported to strategic board. There is a separate project board to manage shared risks between Coventry University and the Council for the Gosford Street project. Regular risk workshops are undertaken on all projects to ensure active monitoring and management.

6.3.2 The financial risk associated with the ERDF sits with the Council. However the risk of claw back by DCLG and/or the EU is minimal so long as the expenditure is defrayed against eligible activity and in the permitted timeframe. This risk will be mitigated by the implementation of strict procedures for the project management of ERDF-funded work and ensuring that the risks for the two outside projects are devolved appropriately to the partner organisations. The Council maintain close liaison with our monitoring officer in DCLG, and ensure that funding contracts awarded by the Council for the completion of infrastructure works place risk on the organisations which complete the works.

- 6.3.3 The City Council's Resources & New Projects (RNP) Team oversee all ERDF that comes into the Council beyond just public realm. They are experienced in dealing with external funding and will ensure that suitable monitoring and governance arrangements are in place at a programme level and appropriately align to the CWLEP's governance structure. The same team also oversee management of the Growth Deal funding in conjunction with CWLEP.
- 6.3.4 The programme manager for the works is responsible for managing compliance with the funding requirements such as publicity, procurement and for monitoring progress including making grant claims to DCLG. The highly experienced Planning, Transport & Highways division who have already successfully delivered Public Realm Phase 1 and parts of Phase 2 will continue to implement any successful public realm schemes.

6.4 What is the impact on the organisation?

6.4.1 HR Implications

- 6.4.2 To ensure successful delivery of these large projects and the Council's ability to provide an adequate accountable body function, additional staff resources may be required and will be recruited through the council's authorised recruitment protocols. Staff are already in place for the existing ERDF-funded projects and they may be able to continue to carry out this function and take on the new projects.

6.5 Equalities / EIA

- 6.5.1 Each of the infrastructure projects will undertake an Equality Impact Assessment as part of project development and impact. The proposals will make movement around the city centre easier for everyone. This is because of the removal of unnecessary street furniture and measures to reduce the dominance of vehicular traffic. However, access by car for those that need it will be maintained. Discussions with the Access Groups and representative organizations are underway to ensure that the design of Belgrade and other areas properly reflects access needs. There have been regular meetings with the Access Development Group and the Coventry and Warwickshire Access Committee to review the impact of Phase 1 to 3 schemes and to consider the design of further schemes. In particular, the Council has been working closely with the Guide Dogs Association providing funding to help the re-training of guide dogs in the new city centre.

6.6 Implications for (or impact on) the environment

- 6.6.1 The large scale infrastructure projects will have an impact on the environment in the city centre. Introducing more capacity at Junction 1 of the ring road and removal of traffic lights at Belgrade Plaza junction will result in freer flowing traffic, which will have a positive impact on air quality. We will also be introducing more green spaces and trees into the city centre.

6.7 Implications for partner organisations?

- 6.7.1 The public realm activities at Belgrade Plaza, Canal Basin and Burges will all increase the attractiveness of these sites to private sector developers, and is likely to bring new employment land forward for development. This is reflected by the fact private sector developers have committed to provide some of their own resources to develop the first two sites, along with agreeing to work in partnership with the Council to deliver Burges redevelopment and demolition of Allied Carpets. The improvements at Fairfax Street/Whittle Arch and Hill top will improve the settings for the Transport Museum and Cathedral, and encourage more footfall in these areas. The public realm improvements in Far Gosford Street will complement the private development in this area and encourage further investment. Transport links will benefit from the Station Access scheme, as this will be the first phase of delivery of the wider Coventry Rail Station Masterplan. Finally, the improvements at Whitley will improve access transport links around the Coventry area and to Whitley Business Park, and unlock development land at Coventry Gateway. The Council owns adjoining land at Burges and we should maximise the potential to improve these areas in conjunction with the Palmer Lane redevelopment.

Report author:**Name and job title:**

Colin Knight, Assistant Director Planning, Transport and Highways

Directorate:

Place Directorate

Tel and email contact:

024 7683 4001

Colin.knight@coventry.gov.uk

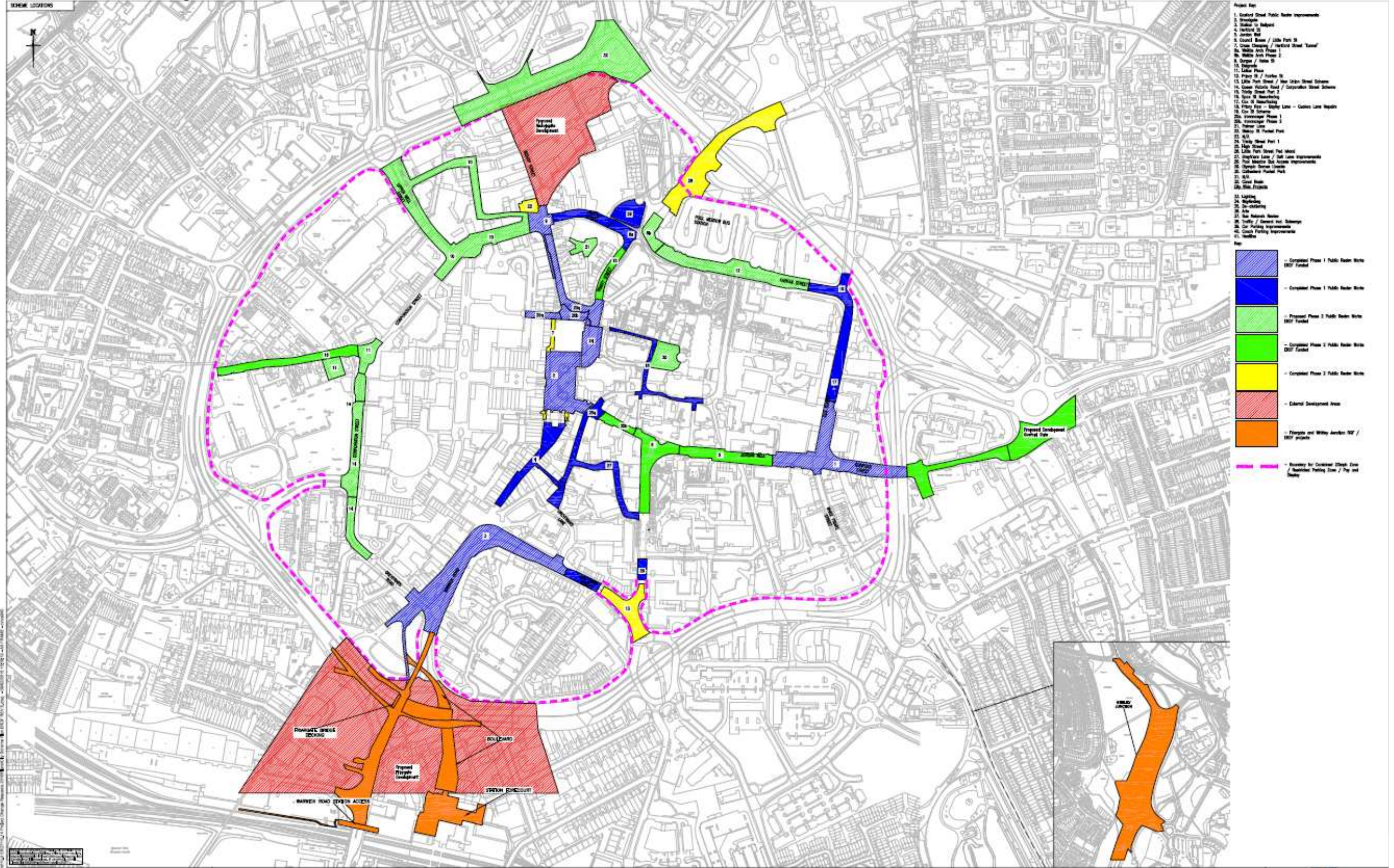
(All queries should be directed to the above person)

Contributor/ Approver name	Title	Directorate	Date doc sent out	Date response received or approved
Contributors:				
Paul Boulton	Head of Traffic & Transportation	Place	5 /2/15	9/2/15
Richard Moon	Senior Development Executive	Place	5/2/15	10/2/15
Mick Burn	Procurement Manager	Resources	5/2/15	10/2/15
Barry Butterworth	Team Leader (Development and Regeneration)	Place	5/2/15	6/2/15
Lara Knight	Governance Services Team Leader	Resources	/2/15	/2/15
Rhian Jones	Programme Manager	Place	2/2/15	9/2/15
Andy Williams	Resources & New Projects Manager	Place	5/2/15	9/2/15
Nigel Clews	Assistant Director, Property Asset Management	Place	5/2/15	9/2/15
Jane Murphy	Special Projects Finance Manager	Resources	5/2/15	8/2/15
Approvers:				
Legal: Rosalyn Lilley	Solicitor	Resources	5/2/15	9/2/15
Finance: Phil Helm	Finance Manager, Place	Place	4/2/15	9/2/15
Director: Martin Yardley	Executive Director	Place	/2/15	9/2/15
Members: Councillor Rachel Lancaster	Cabinet Member (Public Services)	-	5/2/15	10/2/15

This report is published on the council's website:

www.coventry.gov.uk/councilmeetings

APPENDIX A - Plan showing location of Phase 3a schemes



- Project list:
1. Central Street Public Realm Improvements
 2. Broadgate
 3. Market St
 4. Market St
 5. Market St
 6. Council House / Little Fort St
 7. Cross Street / Market Street 'Yard'
 8. Market Street Phase 1
 9. Market Street Phase 2
 10. Market Street Phase 3
 11. Market Street
 12. Market Street
 13. Little Fort Street / New Urban Street Scheme
 14. Cross Street / Corporation Street Scheme
 15. Cross Street Phase 2
 16. Cross Street Phase 3
 17. Cross Street Phase 4
 18. Cross Street Phase 5
 19. Cross Street Phase 6
 20. Cross Street Phase 7
 21. Cross Street Phase 8
 22. Cross Street Phase 9
 23. Cross Street Phase 10
 24. Cross Street Phase 11
 25. Cross Street Phase 12
 26. Cross Street Phase 13
 27. Cross Street Phase 14
 28. Cross Street Phase 15
 29. Cross Street Phase 16
 30. Cross Street Phase 17
 31. Cross Street Phase 18

Legend:

- Completed Phase 1 Public Realm Works (EOP Funded)
- Completed Phase 1 Public Realm Works
- Proposed Phase 2 Public Realm Works (EOP Funded)
- Completed Phase 2 Public Realm Works (EOP Funded)
- Completed Phase 2 Public Realm Works
- Colonial Development Area
- Proposed and Other Aerials / EOP projects
- Boundary for Central Street Area / Restricted Parking Zone / The Red Line

Project Name: PUBLIC REALM 3A

Project Number: 12345

Client: GOVERNMENT OF GENERAL OVERSEER PLAN

Date: 01/01/2024

Version: 1.0

Author: J. Doe

Reviewer: M. Smith

Approval: K. Lee

Project Manager: S. Brown

Project Start: 01/01/2024

Project End: 01/01/2025

Project Status: On Track

Project Budget: £1,000,000

Project Risk: Low

Project Complexity: High

Project Stakeholders: Government, Citizens, Businesses

Project Objectives: Improve public realm, increase safety, enhance aesthetics.

Project Deliverables: Improved public realm, increased safety, enhanced aesthetics.

Project Milestones: Design, Construction, Completion.

Project Risks: Weather, Cost Overrun, Delays.

Project Opportunities: Increased footfall, improved quality of life.

Project Challenges: Limited budget, tight timeline.

Project Success Factors: Strong leadership, clear communication, stakeholder engagement.

Project Lessons Learned: Plan for contingencies, maintain flexibility.

Project Next Steps: Final review, handover to maintenance.

Project Contact: 01234 56789

Project Website: www.project3a.gov.uk

Project Social Media: @Project3A

Project Newsletter: Sign up here

Project Feedback: We value your input

Project Privacy Policy: See here

Project Terms and Conditions: See here

Project Disclaimer: This is a preliminary plan and subject to change.

Project Copyright: © 2024 Government of General Overseer Plan. All rights reserved.

APPENDIX B – Descriptions of new and enhanced schemes

The Friargate programme schemes are as follows:

- **Warwick Road Station Access** - will form part of the new western entrance to the railway station (as per the Coventry Station Masterplan and will provide direct access to the NUCKLE bay platform when it is completed, the Central Six retail park, and important walking routes into the residential areas further out of the city centre. The Warwick Road Tunnel will deliver the first phase of Coventry Railway Station Masterplan (CSMP), and will act as a catalyst for bringing the CSMP forward. The scheme is very important to the city, the current railway station is not fit for purpose in terms of size or facilities, and accessibility is currently very poor. The Friargate Bridge works will greatly improve access between the railway station and city centre, however a link under Warwick Road is also key to unlocking land for development of a new second entrance to the railway station. The new link will provide access to the station for those travelling from the west of Coventry, and is pivotal to deliver the future bus interchange and multi-storey car park on the west side of the station, as well as serve offices, hotels, leisure facilities and residential properties planned as part of the Friargate Masterplan.
- **Whitley Bridge** - Whitley is a priority development site for CWLEP. The project which started on site last summer will create a new gateway bridge and infrastructure over the A444 which will help improve accessibility to key employment sites on the fringe of the city centre, which include Jaguar Landrover (JLR) and Whitley Business Park and open up land for further development and employment opportunities. The project will improve access for vehicles travelling to the sites and will mean they will no longer be forced to drive north into the city and U turn at Whitley Island, and also improve access to the site by public transport, cycle and foot.

The enhanced Public Realm Phase 3a programme schemes are as follows:

- **Belgrade Plaza** – the public highway around Belgrade Plaza will be reconfigured to complement the existing landscaped area to create an attractive public space. The scheme will follow the successful design principles used elsewhere in the city centre, including the removal of the traffic lights. An alternative access to West Orchards car park will be delivered via Lamb St, and there will be further improvements up to junction 9 of the ring road and along Corporation street. Centro have pledged £164k towards a new city centre wayfinding scheme. This will include new totems erected around the city centre to provide information to visitors regarding popular and lesser known tourist attractions, and make it easier to travel around the city through improved information on transport options, including walking and cycle routes and public transport.
- **Lidice Place/Queen Victoria Road and Spon Street:** This scheme will improve pedestrian linkages between the Lower Precinct and Spon Street. This project offers added-value to the current approved scheme through the use of higher quality materials to mirror the successful Council House Square scheme, as well as increased scope through the creation of a new multi-functional events space to enable local traders to hold events. The existing signalised pedestrian crossing adjacent to the City Arcade Entrance will be removed and replaced with a zebra crossing and narrowed carriageway. At the junction of Croft Road and Queen Victoria Road a pseudo roundabout will be constructed to aid in traffic movements. Additional car park spaces will be created adjacent to the City Arcade entrance. The works are proposed to be split into packages to enable phased delivery so should any of the other public realm schemes require additional funds this project can be scaled back accordingly.

The proposed new Public Realm Phase 3a schemes are:

- **Coventry Tourism Package** - The activities to be delivered through this Package will help to strengthen and grow Coventry's tourism sector, which is already estimated to support visitor expenditure of £377 million annually, and nearly 9,600 jobs locally (see Coventry Tourism Impact Assessment, 2011). Recent national studies of our high streets, such as the Grimsey Review and Portas Review, have demonstrated that diversification is integral for future-proofing the nation's city centres, and promotion of leisure, heritage and cultural attractions is key to protecting the city's economic future. A recent survey by Visit England found Coventry to be the fastest growing holiday destination in the West Midlands, with a 37.2 per cent rise in

in the number of visitors to the city between 2008 to 2013. We are keen to capitalise on this success and make further enhancements to our heritage assets to attract visitors to Coventry.

Key activities to be delivered through the proposed Package are listed below:

a) Fairfax Street

As part of Phase Two the City Council received funding from West Midlands Integrated transport Authority (Centro) to create an additional access at Pool Meadow bus station. (This is outside the scope of those put forward for ERDF, but will complement the wider programme). The proposed improvements will capitalise on the benefits of the new bus station entrance by making Fairfax Street much more pedestrian friendly, and creating large expanses of high quality footways and greenery.

This will rejuvenate a run-down area of the city centre and improve links not only to public transport but also the Cathedral quarter which attracts visitors from around the world, along with the popular Transport Museum and support current expansion. There will be provision for improved coach parking facilities, which along with a more pleasant and attractive route will vastly improve the tourist experience in Coventry.

b) Hill Top Conservation Area

Improvements to the public realm are proposed for the city's Cathedral quarter. The improvements will involve installation of new paving and resetting of the attractive cobble setts and also the installation of attractive landscaping at Unity Gardens to improve the attractiveness of the setting for this key tourist attraction.

c) Public Art

Coventry has a rich cultural history and some fantastic tourist attractions including the Cathedral, Herbert Museum and Art Gallery and Transport Museum. However, Coventry's cultural art offer is overshadowed by neighbouring areas such as Stratford Upon Avon, where public art is featured throughout the town and serves as a visitor attraction as well as creating a sense of identity. It is proposed to install a public art literature trail to promote the city's rich literary heritage, which includes authors, poets and playwrights such as Larkin, Tennyson and Shakespeare. The art will complement the high quality public realm works and help promote the city.

d) City Centre Wayfinding

The Smart Signage for car parking is aimed to improve the wayfinding in the city for motorists. This will involve installing smart signage throughout the city centre which will direct vehicles to key city retail, leisure and cultural destinations and car parking provision. This will add to improving the visitor experience to Coventry which is one of the key objectives of the public realm improvements programme.

- **Burges Redevelopment** - Coventry's River Sherbourne is only partially exposed in the city centre and through de-culverting parts of the river, there are ambitious proposals to create a thriving river quarter, surrounded by green space and cafes. The river is currently contained in a large concrete tunnel. In order to deliver this scheme the currently covered over river needs to be opened up and works undertaken to widen the river bed to make a feature of it within the city centre, creating an attractive river side environment and walking route for both residents and tourists.

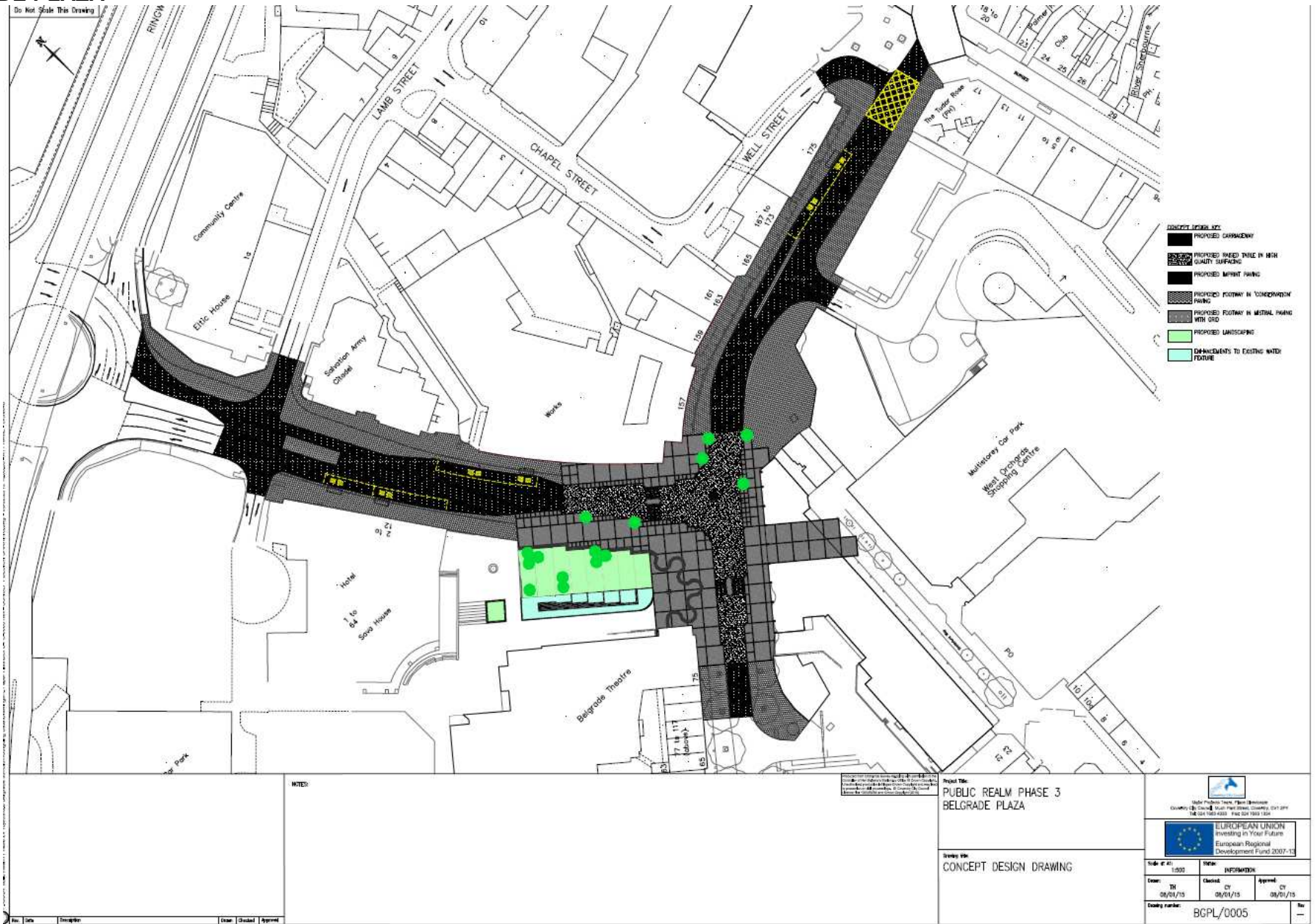
It is proposed to de-culvert the river at Palmer Lane to the Burges, which would stimulate development in this currently run down part of the city, and create a landscaped areas and terraced terrain. In order to achieve this, a derelict building needs to be demolished and the river opened up beneath the highway and the building. This scheme has strong local support, as well as support from the owner of the building and the Environment Agency who we would need to consult with. The Government's Technology Strategy Board recently commissioned a study by Aecom which identified that the river could be worth £1.5bn to the city in future business investment, increased property prices and flood action savings.

Planning consent will be required to deliver this scheme along with Environment Agency approval, but this process is considerably de-risked by the strong support for the scheme. CCC own adjoining lands and buildings and should seek a partner to maximise the potential of this part of the city from opening up the river.

- **Gosford Street Extension** - The works include creating a high quality pedestrian link on the only area of Gosford Street that has yet to be upgraded to tie in with our other public realm works, as well as installation of an attractive high quality sandstone pedestrian route along Far Gosford Street which will boost attractiveness and complement the extensive improvements made to this part of the city. The programme for the works is 4 months, which means that if further ERDF funding becomes available before May 2015 at the latest the scheme will still be deliverable by the end of 2015.
- **Canal Basin / Bishop Street** – The existing footbridge will be demolished, and replaced by a new at grade pedestrian crossing integrated with a reconfigured Junction 1 (Foleshill Road) which will improve capacity and traffic flow. This scheme will complete a high quality pedestrian route linking Broadgate to the canal basin, including improvements to Bishop Street and will also provide a key link in the Cycle Coventry network. This link will also provide a stimulus for the Bishopgate development, and would unlock land for further development to the north of the city centre and link to the new development on the site of the old Coventry and Warwickshire Hospital.

APPENDIX C - Plans of new and enhanced schemes

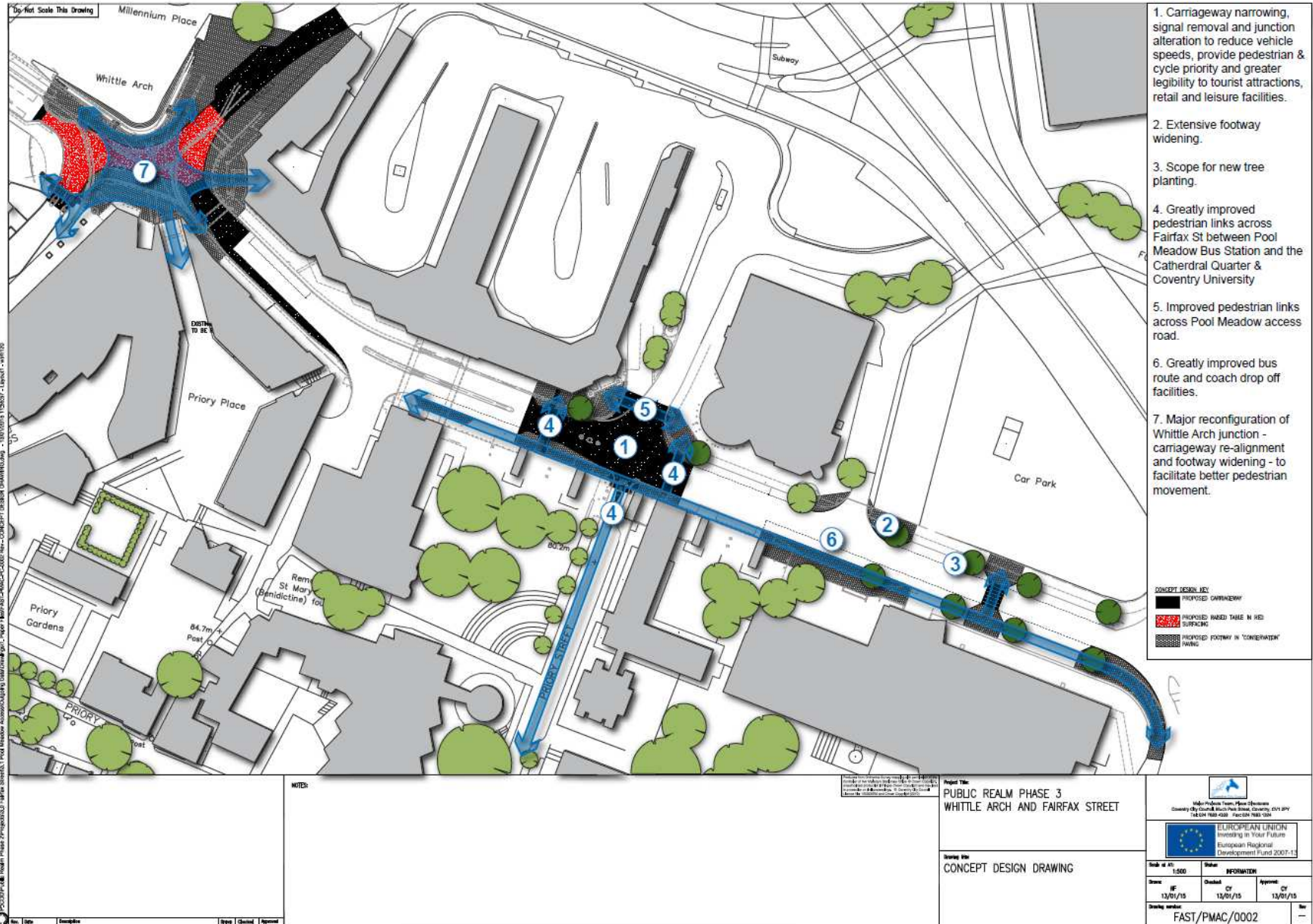
BELGRADE PLAZA



LIDICE PLACE



COVENTRY TOURISM PACKAGE FAIRFAX ST/WHITTLE ARCH



1. Carriageway narrowing, signal removal and junction alteration to reduce vehicle speeds, provide pedestrian & cycle priority and greater legibility to tourist attractions, retail and leisure facilities.
2. Extensive footway widening.
3. Scope for new tree planting.
4. Greatly improved pedestrian links across Fairfax St between Pool Meadow Bus Station and the Cathedral Quarter & Coventry University
5. Improved pedestrian links across Pool Meadow access road.
6. Greatly improved bus route and coach drop off facilities.
7. Major reconfiguration of Whittle Arch junction - carriageway re-alignment and footway widening - to facilitate better pedestrian movement.

CONCEPT DESIGN KEY

- PROPOSED CARRIAGEWAY
- PROPOSED RASSED TABLE IN RED SURFACING
- PROPOSED FOOTWAY IN 'CONCRETEWAY' PAVING

NOTES:

No.	Date	Description	Drawn	Checked	Approved

Project Title:
PUBLIC REALM PHASE 3
WHITTLE ARCH AND FAIRFAX STREET

Drawing Title:
CONCEPT DESIGN DRAWING

Coventry City Council
High Pavement Team, Phase 3
Coventry City Council, High Pavement Street, Coventry, CV1 4PR
Tel: 024 7661 4000 Fax: 024 7661 4001

EUROPEAN UNION
Investing in Your Future
European Regional
Development Fund 2007-13

Scale	1:500	Date	13/01/15	Information	13/01/15	Approved	13/01/15
Drawn							
Checked							
Approved							

Drawing number: FAST/PMAC/0002

HILL TOP IMPROVEMENTS

Do Not Scale This Drawing



© Hill Top Conservation Area, 2015. All Rights Reserved. This drawing is the property of Hill Top Conservation Area and is not to be reproduced without the written consent of Hill Top Conservation Area.

CONCEPT DESIGN KEY	
	PROPOSED CARRIAGEWAY REPAIR/RELAY
	PROPOSED CARRIAGEWAY IN SETS AND 'YORKSHIRE PAVING'
	PROPOSED FOOTWAY IN SETS
	TOWN AND STONE STREET FURNITURE IMPROVEMENTS TO CHANCE AREA
	HIGH QUALITY BENCHES
	EXISTING STREET FURNITURE IMPROVEMENTS
	PROPOSED INFORMATION POINTS AND SIGNAGE
	PROPOSED SCREENING AND FENCING CHANGE STREET CHARACTER
	DECLUTTERING
	PROPOSED STREET LIGHTING
	PROPOSED STREET FURNITURE TO ENHANCE STREET CHARACTER

Project Title:
**PUBLIC REALM PHASE 3
HILL TOP CONSERVATION AREA**

Drawing Title:
CONCEPT DESIGN DRAWING

Hill Top Conservation Area, 184a Dalton Road, Hill Top, Halifax, West Yorkshire, HX8 9JN.

 Tel: 01482 855100 Fax: 01482 855101

EUROPEAN UNION
 Investing in Your Future
 European Regional Development Fund 2007-13

Scale of A1: 1:500	Date: 18/01/15
Drawn by: HTC 13/01/15	Checked by: HTC 13/01/15
Approved by: HTC 13/01/15	Drawn by: HTC 13/01/15

Drawing Number: **HTCA/PC/0002**

BURGES REDEVELOPMENT



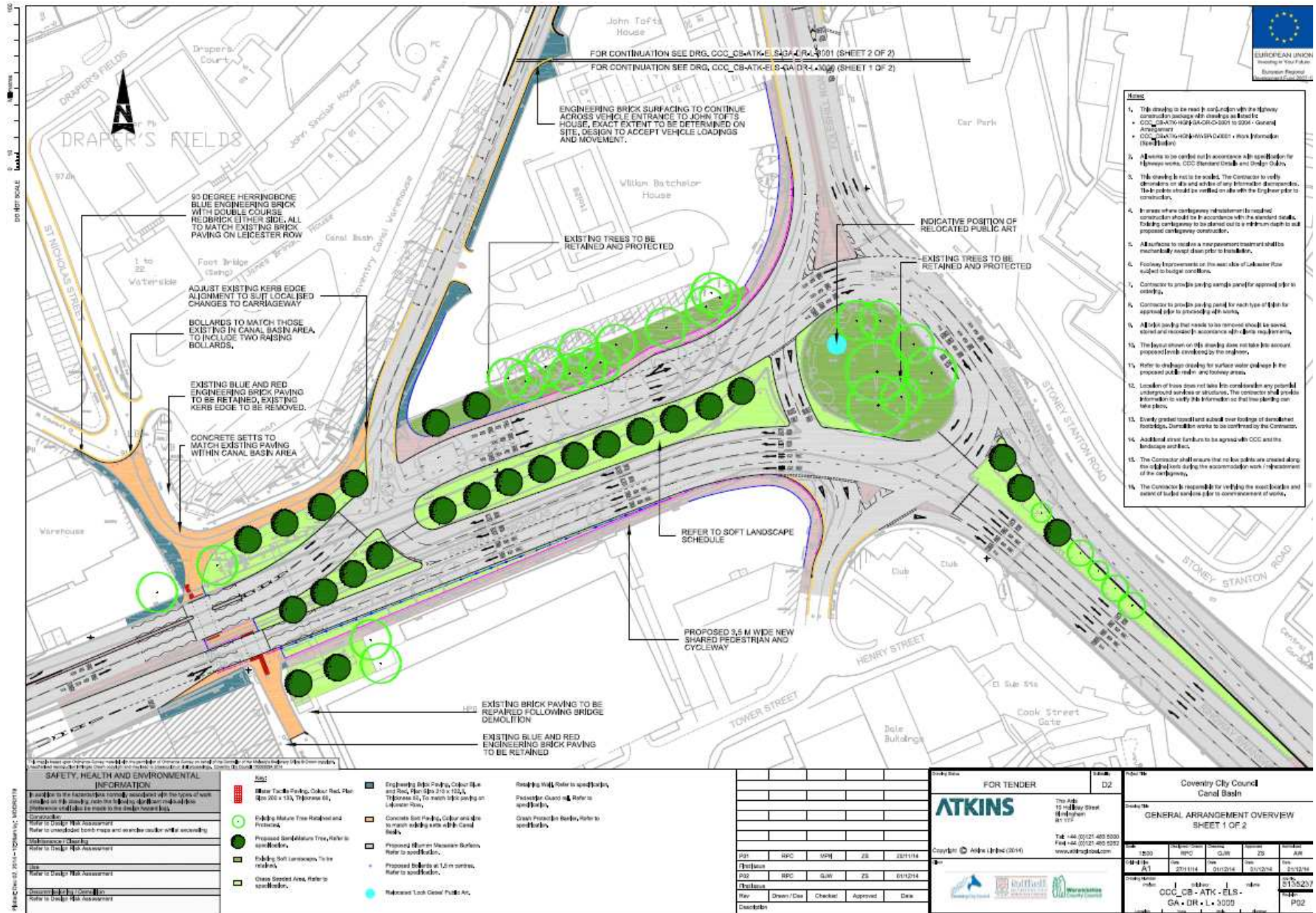
MILLENNIUM VIEW | COVENTRY
MASTERPLAN SKETCH
ARCH | 2013-254 | 06.06.2013

©Hadfield Cawkwell Davidson

Hadfield Cawkwell Davidson

17 Brangrove Rd, Sheffield, S10 3JZ. T 0114 266 8181 F 0114 266 6266 www.hcd.co.uk
Architecture | Engineering | Interior Design | Masterplanning | Urban Design

CANAL BASIN



- Notes**
- This drawing is to read in conjunction with the Highway Construction Manual (HCM) and the following documents:
 - CCC_C8-ATK-ELS-GA-DR-L-001 (SHEET 1 OF 2)
 - CCC_C8-ATK-ELS-GA-DR-L-002 (SHEET 2 OF 2)
 - CCC_C8-ATK-ELS-GA-DR-L-003 (SHEET 3 OF 2)
 - All works to be carried out in accordance with the Highway Construction Manual (HCM) and the following documents:
 - CCC Standard Drawings and Design Guidelines
 - This drawing is not to be scaled. The Contractor to verify dimensions on site and advise any anomalies immediately. The Contractor should be verified on site with the Engineer prior to construction.
 - In areas where carriageway infrastructure is required, construction should be in accordance with the standard details, including carriageway to be placed out to a minimum depth to suit proposed carriageway construction.
 - All surfaces to receive a new pavement treatment shall be reasonably swept clean prior to installation.
 - Footway Improvements on the western side of Leicester Row should be lodged with the Council.
 - Contractor to provide paving panels for approved edge to existing.
 - Contractor to provide paving panels for each type of slab for approved edge to existing.
 - All trees that need to be removed should be saved, stored and replaced in accordance with the requirements proposed in the landscape schedule.
 - The layout shown on this drawing does not take into account proposed works considered by the Engineer.
 - Note to change existing surface water drainage in the proposed cycleway and footway areas.
 - Location of trees does not take into consideration any proposed underground services or structures. The Contractor should provide information to verify this information so that tree planting can take place.
 - Every grade should be set out over beddings of demolished footpaths, pavements, etc. to be confirmed by the Contractor.
 - Additional street furniture to be agreed with CCC and the Landscape Architect.
 - The Contractor shall ensure that no vehicles are stored along the highway during the construction work (impedement of the highway).
 - The Contractor is responsible for verifying the exact location and extent of existing works prior to commencement of works.

SAFETY, HEALTH AND ENVIRONMENTAL INFORMATION

Refer to the Environmental Statement, Appendix 10 for details of work activities and the measures to be taken to avoid, reduce or offset any adverse effects on the environment.

Construction:
Refer to Design Risk Assessment
Refer to unexcavated bomb maps and search for cables and/or sewerage

Construction Safety:
Refer to Design Risk Assessment

Site:
Refer to Design Risk Assessment

Construction Site Location:
Refer to Design Risk Assessment

Symbol	Description
[Red dashed line]	Water Trench Paving, Colour Red, 200mm x 150mm, 150mm deep, to match existing paving on Leicester Row.
[Green circle]	Existing Mature Tree Retained and Protected.
[Green circle with cross]	Proposed Sapling Tree, Refer to specification.
[Green square]	Existing Soft Landscaping To be retained.
[Green square with cross]	Green Street Area, Refer to specification.
[Blue circle]	Relocated Look Good! Public Art.
[Blue square]	Engineering Brick Paving, Colour Blue and Red, Refer to specification.
[Orange square]	Concrete Set Paving, Colour Blue and Red, to match existing paving on Leicester Row.
[Blue square with cross]	Proposed 100mm Measure Barriers, Refer to specification.
[Blue square with dot]	Proposed bollards at 1.2m centres, Refer to specification.
[Blue circle with cross]	Relocated Look Good! Public Art.

Rev	Drawn / Date	Checked	Approved	Date
P01	RPC	GRH	ZS	20/11/14
P02	RPC	GRH	ZS	01/12/14

FOR TENDER

ATKINS

The Add
10 Bay Street
B1 1EP

Tel: +44 (0)121 405 0300
Fax: +44 (0)121 405 0352
www.atkins.co.uk

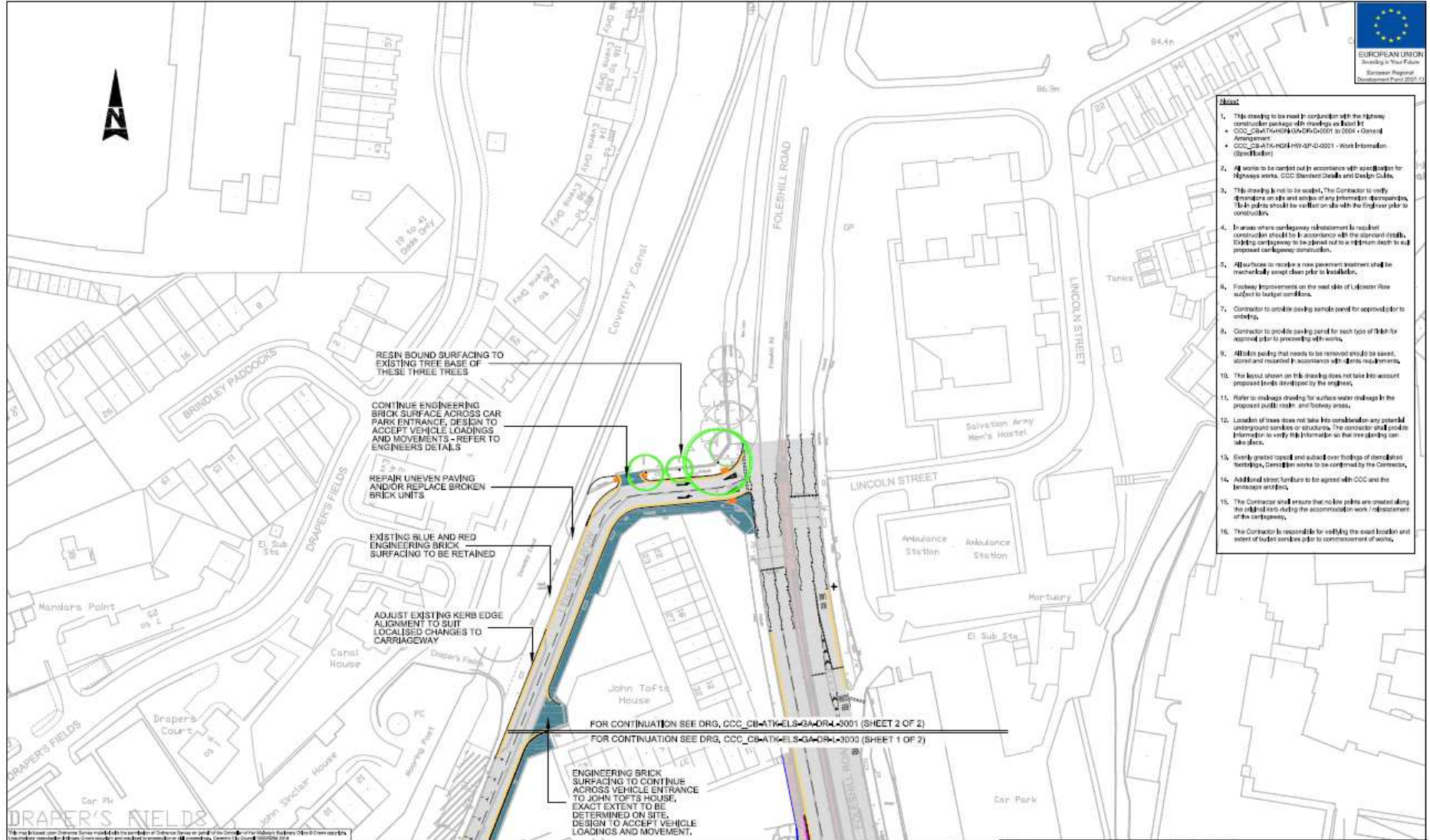
Copyright © Atkins (2014)

Coventry City Council
Canal Basin

GENERAL ARRANGEMENT OVERVIEW SHEET 1 OF 2

Rev	Date	By	Check	Appr	Date
1	20/11/14	GRH	ZS		20/11/14

Project No: ST352/27
Sheet No: P02



- Notes**
- This drawing to be read in conjunction with the Highway Construction Package with drawings as listed in:
 - CCC_CB-ATK-ELS-GA-DR-L-3000 - General Arrangement
 - CCC_CB-ATK-ELS-GA-DR-L-3001 - Work Information (See Header)
 - All works to be carried out in accordance with applicable Design for Highway works, CCC Standard Details and Design Rules.
 - This drawing is not to be scaled. The Contractor to verify dimensions on site and accept any information discrepancies. Risk points should be verified on site with the Engineer prior to construction.
 - Wherever a carriageway replacement is required construction should be in accordance with the proposed details, including carriageway to be planned out to a minimum depth to suit proposed carriageway construction.
 - All works to require a new pavement treatment shall be mechanically swept clean prior to installation.
 - Final improvements on the east side of Lincoln Street subject to budget conditions.
 - Contractor to provide parking samples panel for approval prior to ordering.
 - Contractor to provide paving panel for each type of brick for approval prior to proceeding with works.
 - All brick paving that needs to be removed should be swept, swept and recorded in accordance with the requirements.
 - The layout shown on this drawing does not take into account proposed levels developed by the engineer.
 - Refer to drainage drawing for surface water drainage in the proposed public realm and footway areas.
 - Location of trees does not take into consideration any potential underground services or structures. The contractor shall provide information to verify this information so that tree planting can take place.
 - Every planted tree and subsoil over footings of structures, footings, drainage works to be confirmed by the Contractor.
 - Additional street furniture to be agreed with CCC and the landscape architect.
 - The Contractor shall ensure that no loss points are created along the carriageway during the accommodation work / replacement of the carriageway.
 - The Contractor is responsible for verifying the road location and extent of public works prior to commencement of works.

SAFETY, HEALTH AND ENVIRONMENTAL INFORMATION

In addition to the hazard data normally associated with the types of work detailed on this drawing, note the following additional risk factors. Mitigation measures should also be made to the applicable risk factors.

Consultation:
Refer to Design Risk Assessment
Refer to unexcavated bomb maps and aerials caution whilst excavating

Restrictions:
Refer to Design Risk Assessment

Use:
Refer to Design Risk Assessment

Restrictions:
Refer to Design Risk Assessment

Symbol	Description
	Reinforced Concrete Slab, Colour Red, Plan Size 200 x 125, Thickness 85.
	Existing Mature Tree Retained and Protected.
	Proposed Semi-Mature Tree. Refer to specifications.
	Existing Soft Landscape, To be retained.
	Gross Seeded Area, Refer to specifications.
	Engineering Brick Paving, Colour Red and Res, Plan Size 215 x 102.5, Thickness 85, To match existing paving on Lincoln Street.
	Concrete Silt Paving, Colour and site to match existing sets within Canal Bed.
	Proposed Human Mesotane Surfaces, Refer to specifications.
	Proposed Bulbs at 1.2 m centres, Refer to specifications.
	Relocated Cash Dates Public Art.

Rev	Desc	Drawn/Iss	Checked	Approved	Date

FOR TENDER

ATKINS

The Acks
10 Highbury Street
Birmingham
B1 1TP

Tel: +44 (0)121 483 9000
Fax: +44 (0)121 425 2252
www.atkins.com

Copyright © Atkins Limited (2014)

Project No:		D2		Client:		Coventry City Council Canal Basin	
Title:		GENERAL ARRANGEMENT OVERVIEW		Sheet:		SHEET 2 OF 2	
Rev	Issue	Rev	Issue	Rev	Issue	Rev	Issue
A1	2011/1/14	01/02/14	31/12/14	01/12/14	01/12/14	01/12/14	01/12/14
Drawing Code:		CCC_CB - ATK - ELS - GA - DR - L - 3001		Project Code:		S1126237	
Revision:		P02		Scale:			

CANAL BASIN – BISHOP ST LINK



NOTES:

No.	Date	Description	By	Checked	Approved
1	12/01/15	Issued for approval			

Project Title:
**PUBLIC REALM PHASE 3
 BISHOP STREET**

Scale of A1:
 1:250

Drawn:
 AW
 06/01/15

Checked:
 CY
 06/01/15

Approved:
 CY
 06/01/15

Project Number:
 BIST/0001

Sheet Number:
 A

Project Title:
**PUBLIC REALM PHASE 3
 BISHOP STREET**

Scale of A1:
 1:250

Drawn:
 AW
 06/01/15

Checked:
 CY
 06/01/15

Approved:
 CY
 06/01/15

Project Number:
 BIST/0001

Sheet Number:
 A

EUROPEAN UNION
 Investing in Your Future
 European Regional
 Development Fund 2007-13

